

Health and safety measures for the resumption of activity at ENSCP

These measures have been taken to avoid contamination/propagation of the virus and **it is important that everyone respects them in order to protect themselves and others.**

It is recommended that people pay attention to any clinical signs, stay at home **when they present symptoms** (fever, cough, sneezing, shortness of breath, etc...) and have a consultation of teleconsultation without delay.

If you feel ill, we recommend that you stay home and postpone your visit to school. It is advisable to measure your own temperature if you feel feverish and to self-monitor for suggestive symptoms of Covid-19.

If symptoms worsen, with difficulty breathing and signs of choking. Call 15 (SAMU).

We invite people diagnosed by a doctor as having symptoms of Covid-19 to inform the Human Resources so that they can notify those who have been in contact with you.

Reminder of barrier gestures :

- Wash your hands regularly, preferably with soap and water, failing that, with hydro-alcoholic gel,
- Cough or sneeze into your elbow,
- Use disposable tissues,
- Apply « physical distancing » to limit the spread of the virus :
 - Keep at least one metre away from any person.
 - No hugging.
 - Do not shake hands.
 - No face-to-face conversation without mask. Long conversations should be avoided.

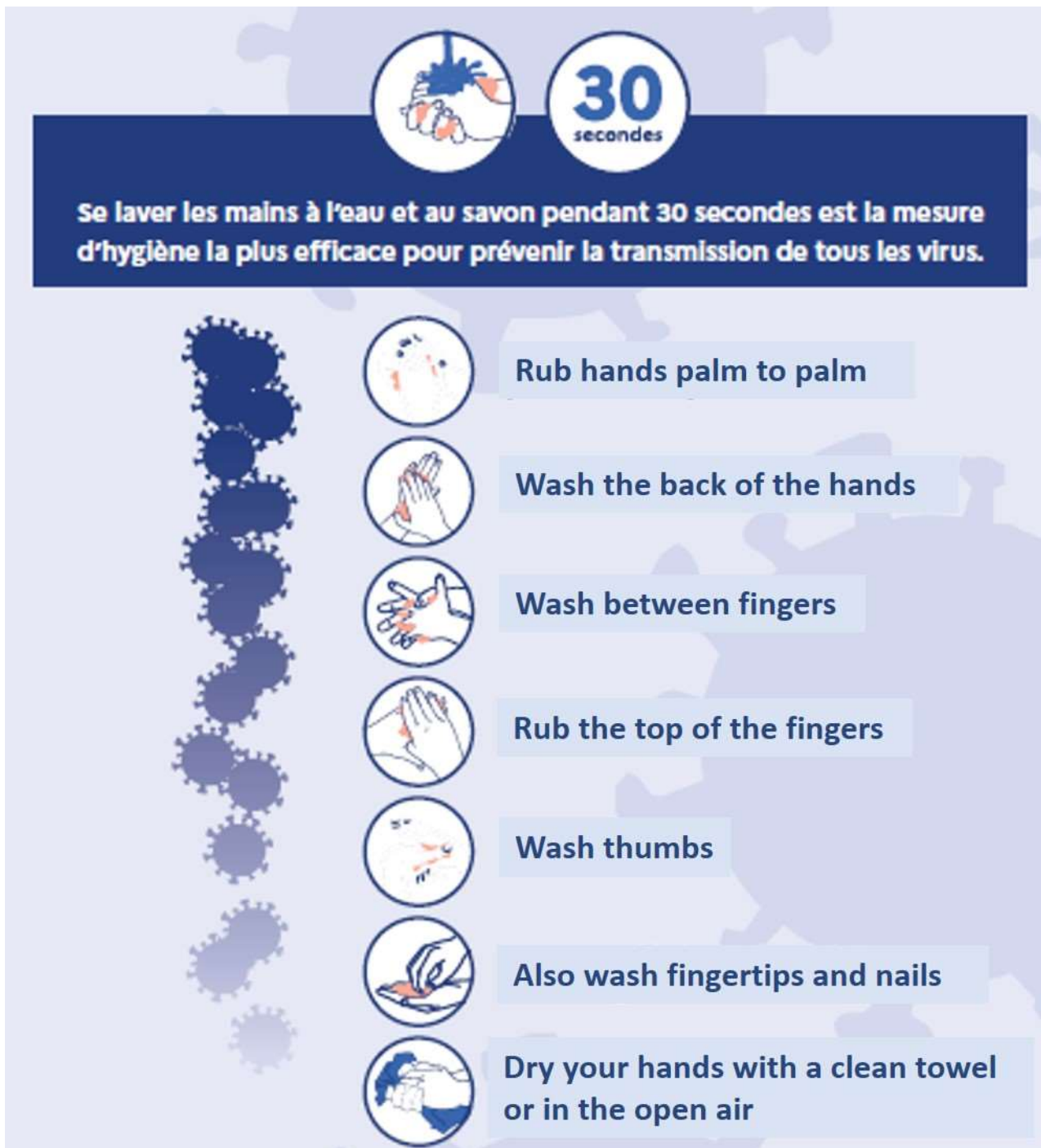
Reminder : **teleworking is to be favoured** and your presence at school is limited to experimental work.

Access to the school :

- The school will be open from 8am to 7pm on working days.
- Presence in the establishment between 7pm and 8am as well as on week-ends is forbidden.
- I respect the schedule and the staggered arrival time defined with my unit or department in order to limit the crowds at school.
- I enter in the establishment through **the main entrance only**.
- Badging is systematic, any person without a badge will not be able to enter the establishment.
- It will be strictly forbidden to bring into the school any person not present on the predefined schedules.
- I limit the entrances and exits of the establishment to the extreme minimum.

When you arrived at the school :

- I respect the entry and exit circuit in order to limit crossings and distancing (*ground markings*).
- Dispensers of hydro-alcoholic gel will be present at the reception desk and in various points of the school (especially on the stairwell landings) to wash your hands.
- **Masks will be provided to you at the reception desk for your work day at school.** In order to allow for a smooth arrival and to avoid groupings, **we ask you not to linger at the reception desk when the masks are handed out.**
- I take note of the global instructions set up for this return to activity.

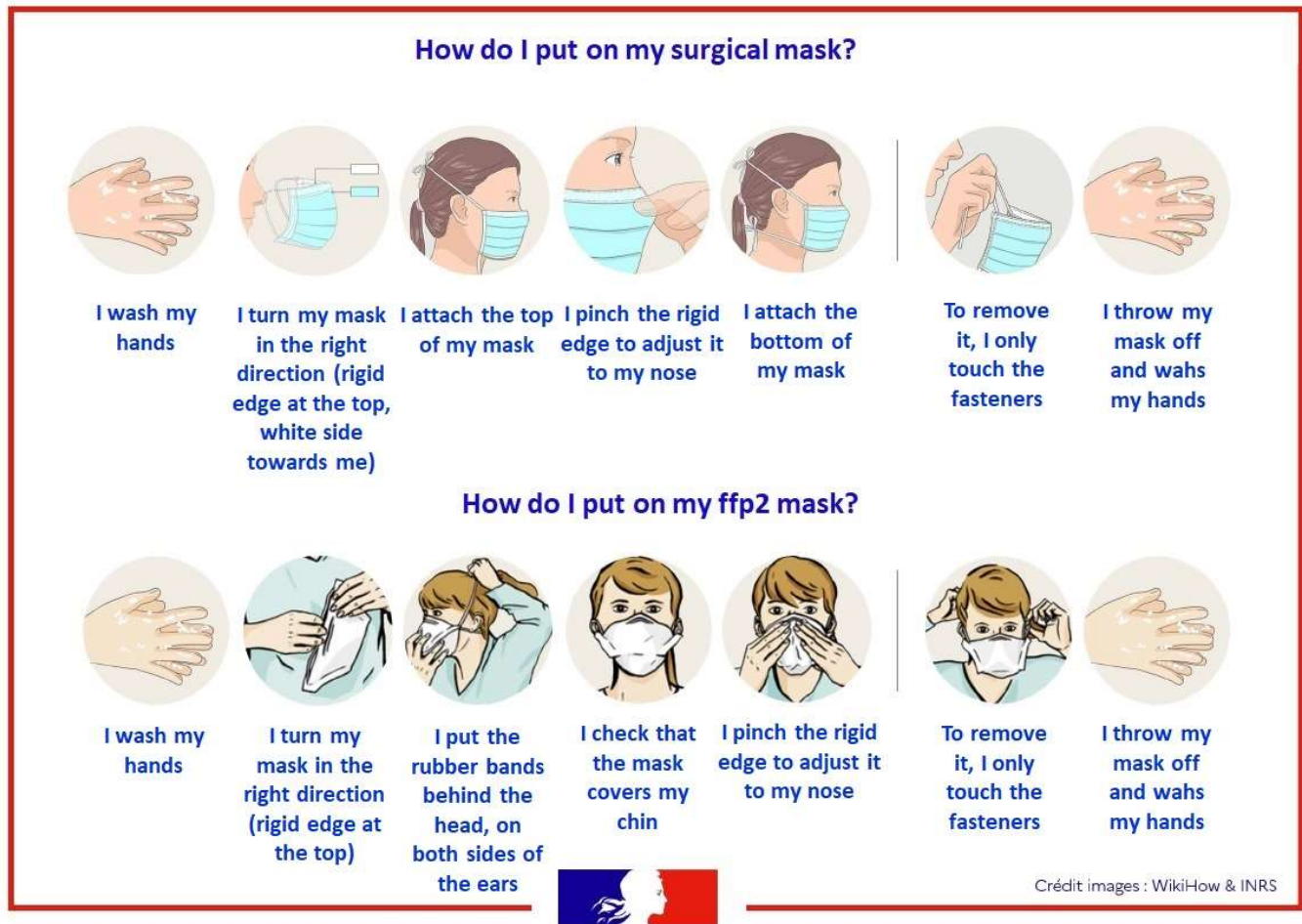


(Source : Santé Publique France)

The mask how and when ?

How do you put your mask on ?

- Before putting on or remove the mask, I wash my hands or rub them with hydro-alcoholic gel.
- When I wear my mask, I don't touch it with my hands.
- I change my mask when it is wet and every 4 hours for surgical masks.
- I throw it in the bins dedicated to masks and towels. A bin will be available at the reception desk.



(Source : Ministère des Solidarités et de la Santé)

When masks are mandatory in school :

- In common areas (e.g. reception, corridors, stairs, store).
- In laboratories and offices, if you're not alone.

School traffic :

- I limit my movements in the school to the bare minimum.
- I'm holding my right in traffic.
- I give priority to the person already engaged on the stairs so as not to cross it.
- Only one person is allowed in each lift, the use of which must be avoided.
- I don't wear gloves outside the lab : they give a false sense of protection. Gloves themselves become vectors of transmission, the risk of wearing hands to the face is the same as without gloves, so the risk of contamination is equal or even higher.
- Smokers are requested to avoid the entrances and exits of the building and are invited to use the inner courtyard respecting the distancing.

In the lab :

- Physical distancing must be respected if one is not alone.
- Wearing a mask is mandatory, if you are not alone + wearing the usual PPE (lab coat, gloves, glasses, etc...).
- I avoid multiple manipulations when technically possible.
- When I leave the lab, I leave my PPE.

At the office :

- Physical distancing must be respected if one is not alone.
- Wearing a mask is mandatory, if you are not alone.
- It's up to each agent to maintain his or her workplace :
 - Keyboard, mouse, computer screen and the phone with alcoholic cloths (at least 70%).
 - Desktop and chair with single-use virucidal wipes or disinfectant spray.

Disinfectant wipes and sprays will be available to teams at the store (to be collected by one person per team).

Gatherings :

- The collective space (libraries, classrooms, meeting rooms) are closed.
- Meetings will be held by videoconference for more than 2 people.
- Lunch will take place in the offices or outside the building.
- Drink and snack vending machines (water fountains included) will be taken out of service. The use of coffee machines, refrigerators and microwaves is prohibited.